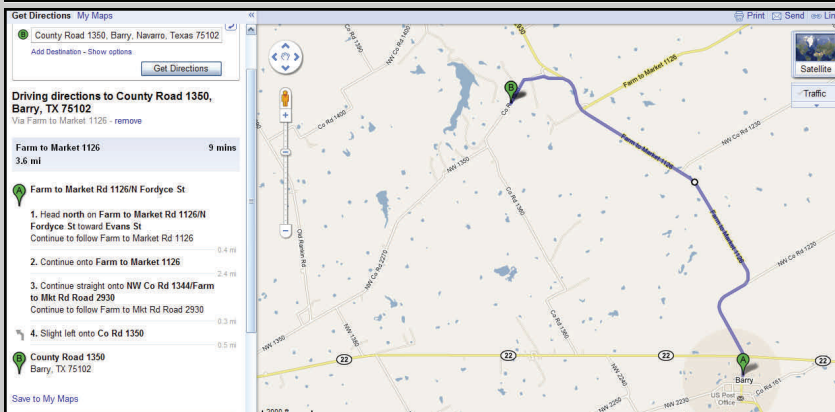


14.53 Acres, Cryer Creek Area



Property Description: 14 + acres in sought after Cryer Creek-Blooming Grove area of northern Navarro County. Native grasses, stock pond and scattered trees. Sandy Loam soils, elevation approx 530 above sea level. No flood plane per FEMA maps. A great location for your country dream home. Plenty of room for horses or other livestock. Blooming Grove Schools. Convenient to Corsicana, Waxahachie and the DFW metroplex. Water and electric available at road, per owner.

\$49,900



Directions: From Barry, TX at intersection HWY 22 & FM 1126, take 1126 north 2.4 miles to FM 2930 (left) .3 miles to NW CR 1350 (left) .5 miles. Property on right.

128 S. Fordyce Street Blooming Grove, TX 76626 Office: 903.695.2978 Fax: 903.695.2980

www.BlueSkyCountry.com

Information contained herein has been obtained from the owner of the property or obtained from other sources that we deem reliable. We have no reason to doubt its accuracy, but we do not guarantee it.

