

177 Acres

Richland Creek

Approx. 1500' Road Frontage

SW CR 3160

40' wide access easement to be surveyed out

- * List Price: \$2,100 per Acre
- * Utilities Available, per Owner
- * Good Mix Hardwoods/Pasture
- * Richland Creek Frontage
- * Lots of Wildlife: Deer, Hogs, Turkey, Dove
- * Sandy Soil, Great for your Horses

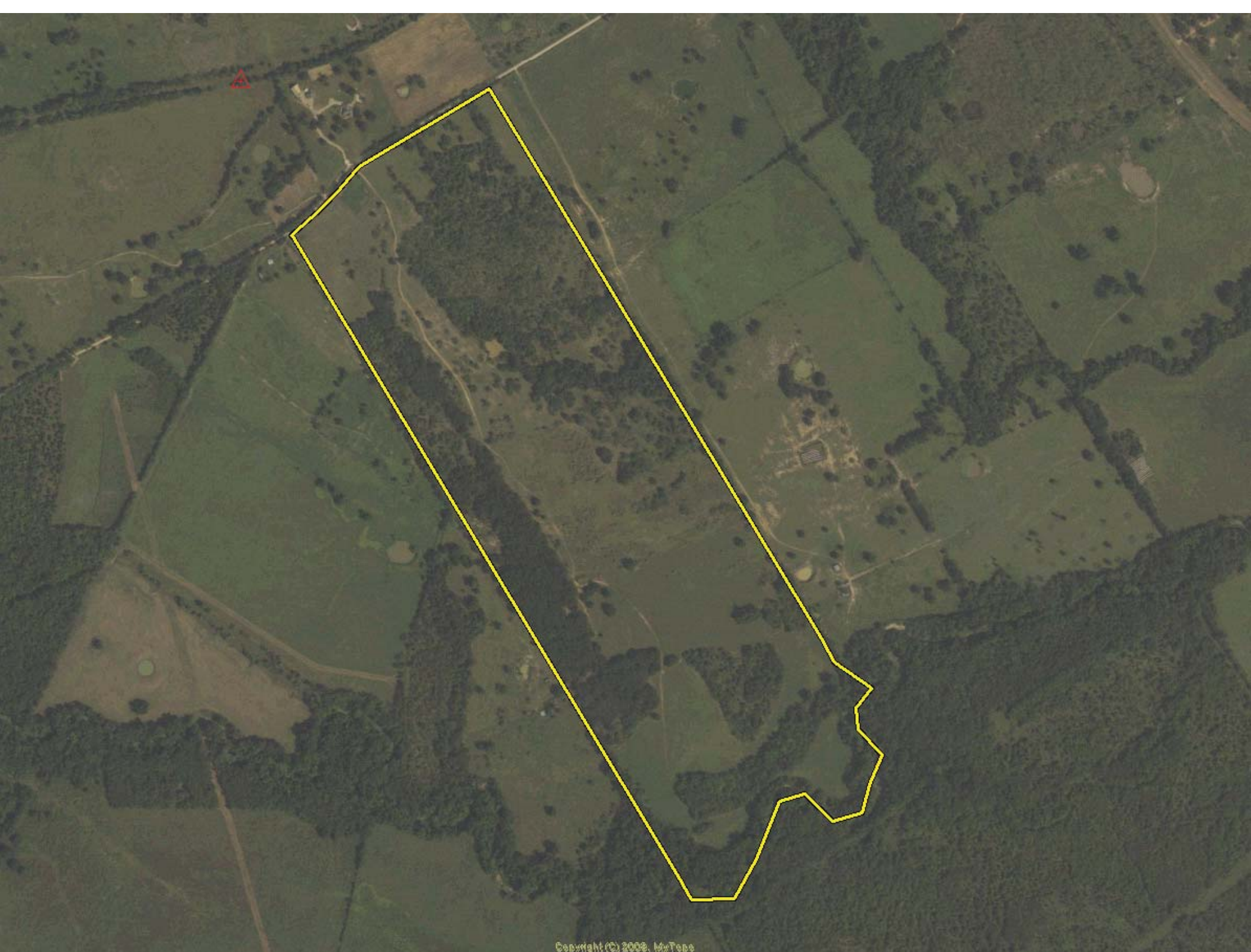


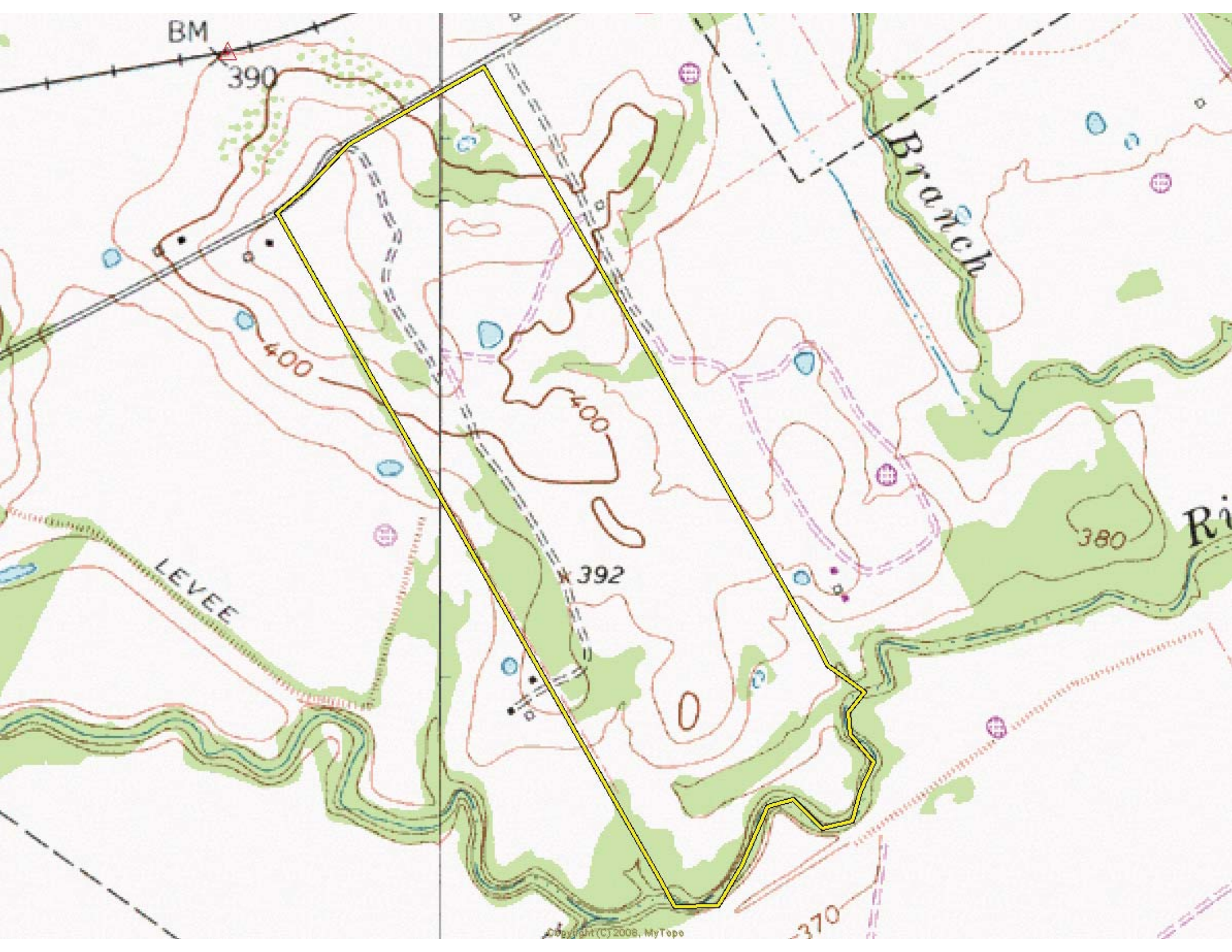
Purdon, TX

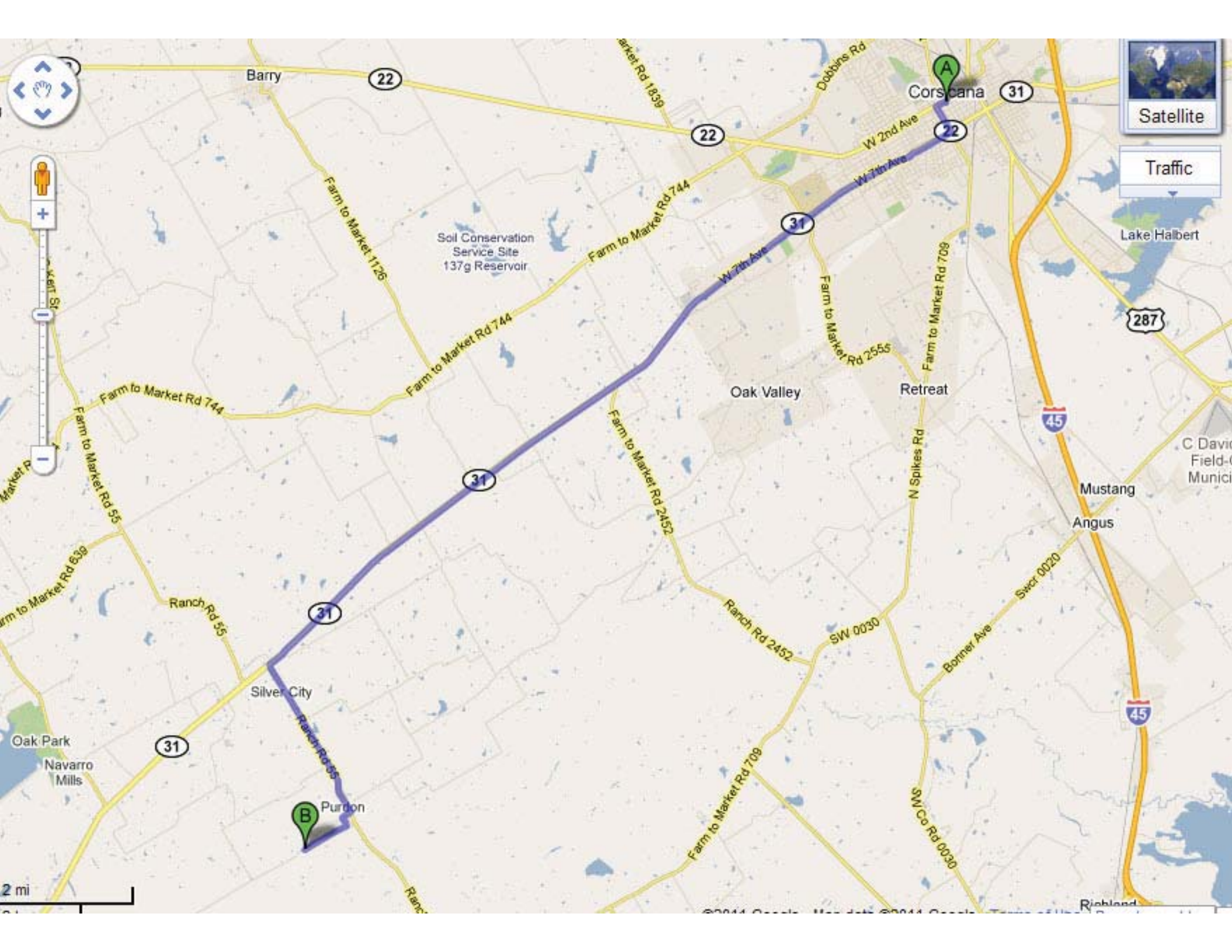
SW CR 3160

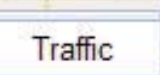
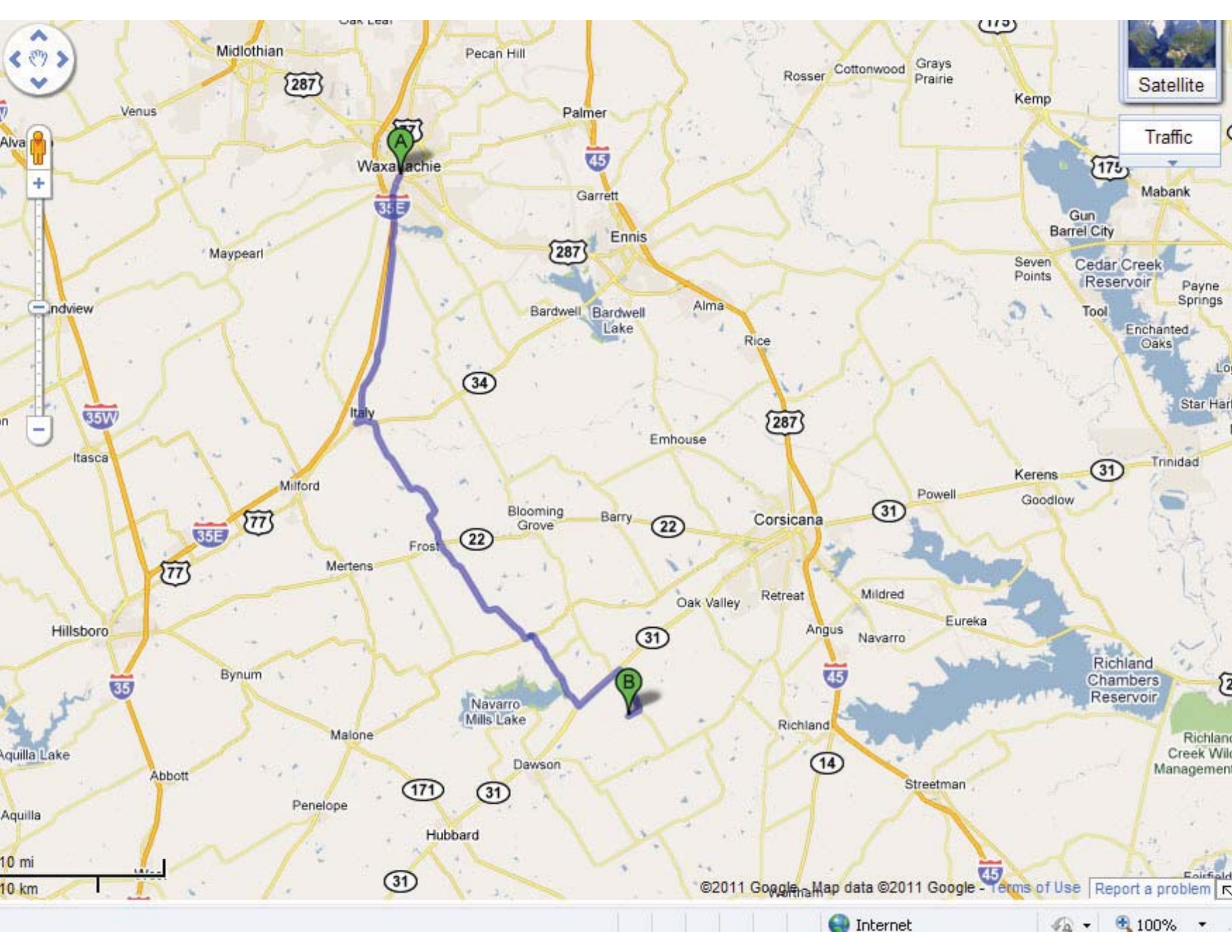
FM 55

177 AC









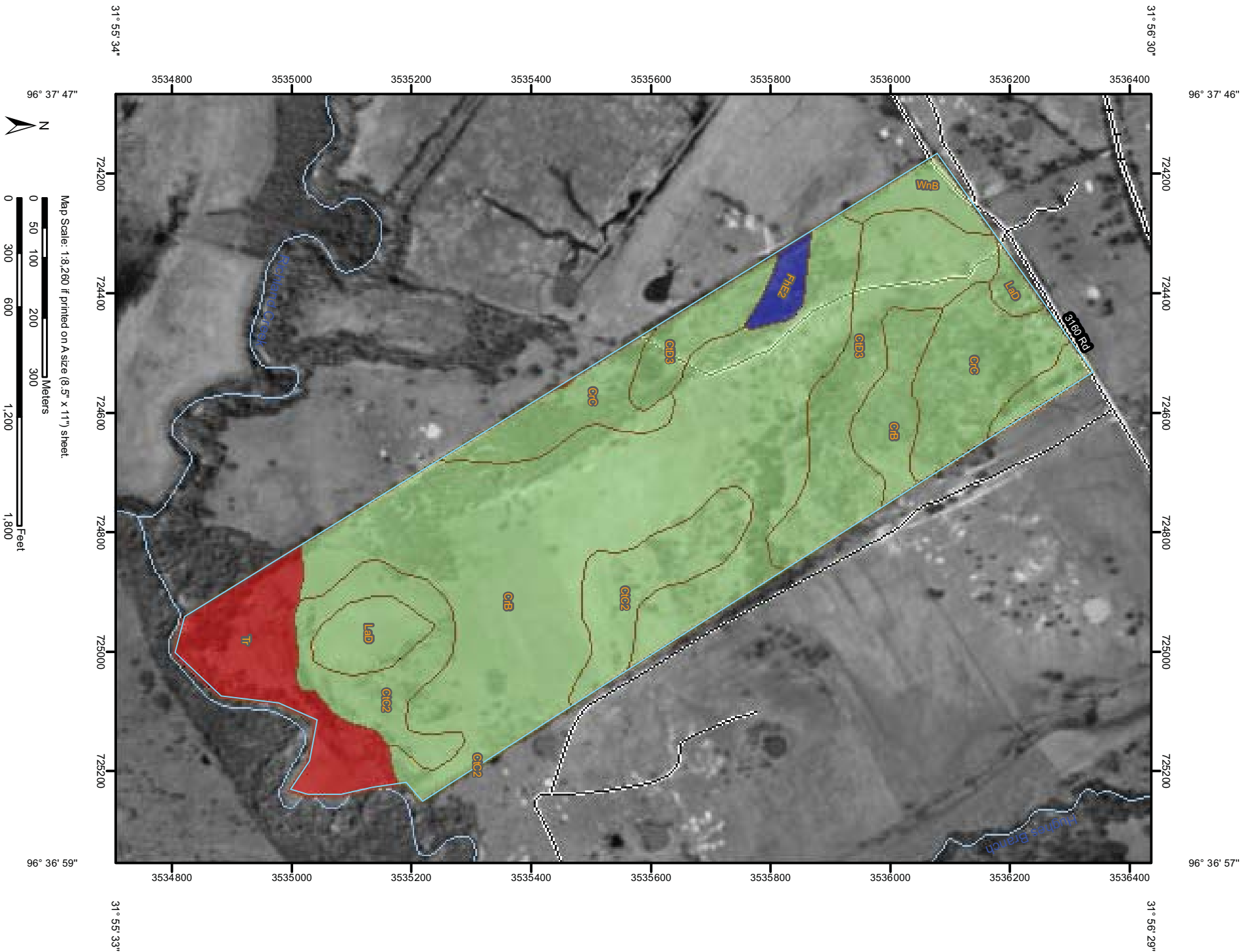
10 mi
10 km

©2011 Google, Map data ©2011 Google - Terms of Use Report a problem

Internet

100%


Range Production (Favorable Year)—Navarro County, Texas
(177 Acres, Purdon)



Range Production (Favorable Year)–Navarro County, Texas
(177 Acres, Purdon)

MAP LEGEND


Area of Interest (AOI)


 Area of Interest (AOI)


Soils


 Soil Map Units

Soil Ratings

 <= 5850

 > 5850 AND <= 6000


 > 6000 AND <= 6650

 Not rated or not available

Political Features

 Cities

Water Features

 Oceans

 Streams and Canals


Transportation

 Rails

 Interstate Highways

 US Routes

 Major Roads

 Local Roads

MAP INFORMATION

Map Scale: 1:8,260 if printed on A size (8.5" × 11") sheet.

The soil surveys that comprise your AOI were mapped at 1:24,000.

Please rely on the bar scale on each map sheet for accurate map measurements.

Source of Map: Natural Resources Conservation Service
Web Soil Survey URL: <http://websoilsurvey.nrcs.usda.gov>
Coordinate System: UTM Zone 14N NAD83

This product is generated from the USDA-NRCS certified data as of the version date(s) listed below.

Soil Survey Area: Navarro County, Texas
Survey Area Data: Version 6, Oct 26, 2009

Date(s) aerial images were photographed: 3/8/1995

The orthophoto or other base map on which the soil lines were compiled and digitized probably differs from the background imagery displayed on these maps. As a result, some minor shifting of map unit boundaries may be evident.

Range Production (Favorable Year)

Range Production (Favorable Year)— Summary by Map Unit — Navarro County, Texas				
Map unit symbol	Map unit name	Rating (pounds per acre per year)	Acres in AOI	Percent of AOI
CrB	Crockett fine sandy loam, 1 to 3 percent slopes	6000	78.2	47.3%
CrC	Crockett fine sandy loam, 3 to 5 percent slopes	6000	18.9	11.4%
CrC2	Crockett soils, 2 to 5 percent slopes, eroded	6000	19.9	12.0%
CrD3	Crockett soils, 2 to 8 percent slopes, severely eroded	6000	23.0	13.9%
Fhe2	Farris and Heiden clays, 5 to 15 percent slopes, eroded	6650	2.2	1.3%
LaD	Lamar clay loam, 3 to 8 percent slopes	6000	6.0	3.6%
Tr	Trinity clay, frequently flooded	5850	13.7	8.3%
WhB	Wilson clay loam, 1 to 3 percent slopes	6000	3.3	2.0%
Totals for Area of Interest			165.3	100.0%

Description

Total range production is the amount of vegetation that can be expected to grow annually in a well managed area that is supporting the potential natural plant community. It includes all vegetation, whether or not it is palatable to grazing animals. It includes the current year's growth of leaves, twigs, and fruits of woody plants. It does not include the increase in stem diameter of trees and shrubs. It is expressed in pounds per acre of air-dry vegetation. In a favorable year, the amount and distribution of precipitation and the temperatures make growing conditions substantially better than average. Yields are adjusted to a common percent of air-dry moisture content.

In areas that have similar climate and topography, differences in the kind and amount of vegetation produced on rangeland are closely related to the kind of soil. Effective management is based on the relationship between the soils and vegetation and water.

Rating Options

Units of Measure: pounds per acre per year

Aggregation Method: Weighted Average

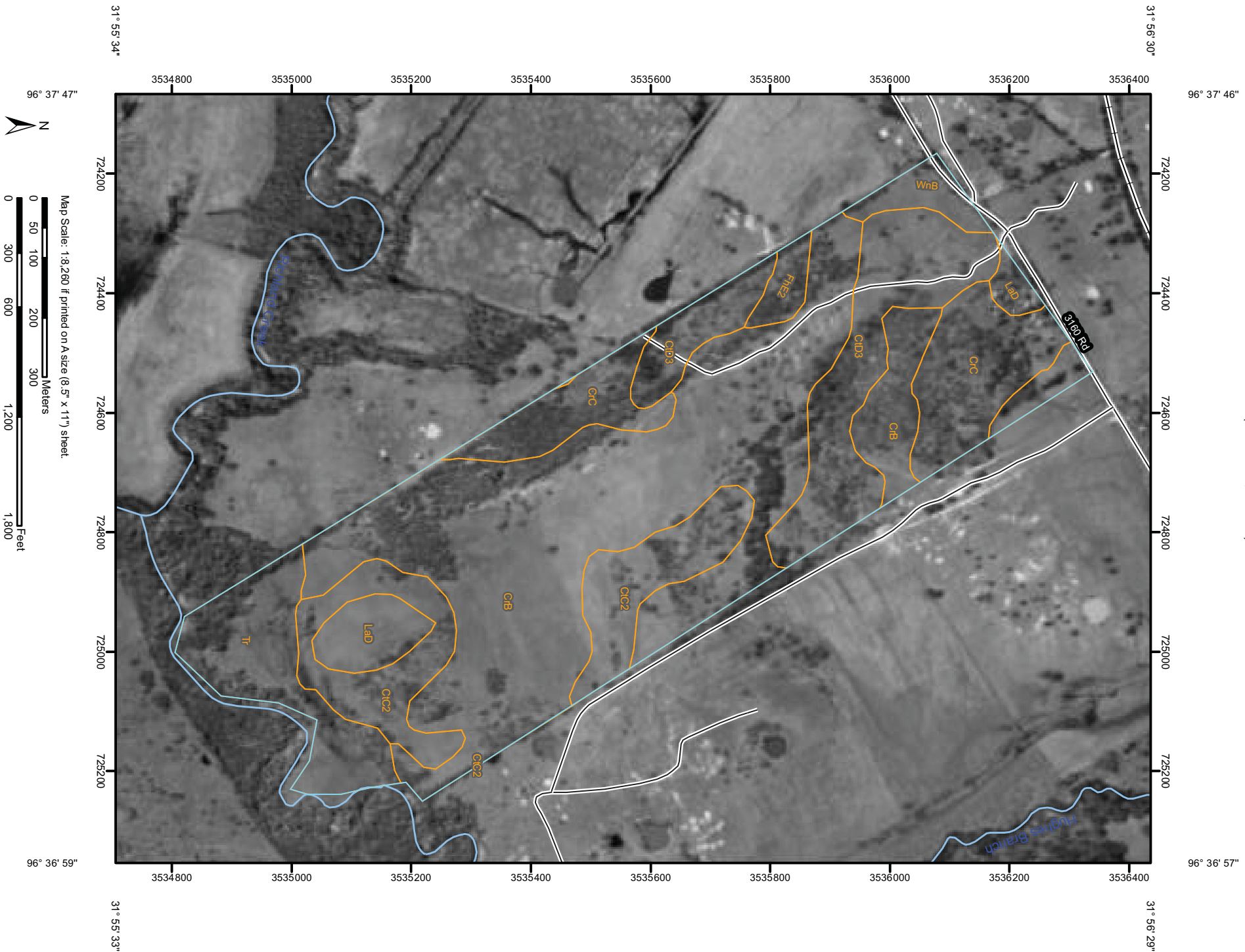
Component Percent Cutoff: None Specified

Tie-break Rule: Higher




Interpret Nulls as Zero: Yes

Soil Map—Navarro County, Texas
(177 Acres, Purdon)



MAP LEGEND








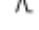




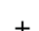

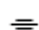

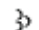

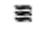


Area of Interest (AOI)




 Area of Interest (AOI)

Soils




 Soil Map Units

Special Point Features

-  Blowout
-  Borrow Pit
-  Clay Spot
-  Closed Depression
-  Gravel Pit
-  Gravelly Spot
-  Landfill
-  Lava Flow
-  Marsh or swamp
-  Mine or Quarry
-  Miscellaneous Water
-  Perennial Water
-  Rock Outcrop
-  Saline Spot
-  Sandy Spot
-  Severely Eroded Spot
-  Sinkhole
-  Slide or Slip
-  Sodic Spot
-  Spoil Area
-  Stony Spot

-  Very Stony Spot
-  Wet Spot
-  Other



Special Line Features

-  Gully
-  Short Steep Slope
-  Other






Political Features

-  Cities

Water Features

-  Oceans
-  Streams and Canals

Transportation

-  Rails
-  Interstate Highways
-  US Routes
-  Major Roads
-  Local Roads

MAP INFORMATION

Map Scale: 1:8,260 if printed on A size (8.5" × 11") sheet.

The soil surveys that comprise your AOI were mapped at 1:24,000.

Please rely on the bar scale on each map sheet for accurate map measurements.

Source of Map: Natural Resources Conservation Service
Web Soil Survey URL: <http://websoilsurvey.nrcs.usda.gov>
Coordinate System: UTM Zone 14N NAD83

This product is generated from the USDA-NRCS certified data as of the version date(s) listed below.

Soil Survey Area: Navarro County, Texas
Survey Area Data: Version 6, Oct 26, 2009

Date(s) aerial images were photographed: 3/8/1995

The orthophoto or other base map on which the soil lines were compiled and digitized probably differs from the background imagery displayed on these maps. As a result, some minor shifting of map unit boundaries may be evident.

Map Unit Legend

Navarro County, Texas (TX349)			
Map Unit Symbol	Map Unit Name	Acres in AOI	Percent of AOI
CrB	Crockett fine sandy loam, 1 to 3 percent slopes	78.2	47.3%
CrC	Crockett fine sandy loam, 3 to 5 percent slopes	18.9	11.4%
CrC2	Crockett soils, 2 to 5 percent slopes, eroded	19.9	12.0%
CrD3	Crockett soils, 2 to 8 percent slopes, severely eroded	23.0	13.9%
FHe2	Ferris and Heiden clays, 5 to 15 percent slopes, eroded	2.2	1.3%
LAD	Lamar clay loam, 3 to 8 percent slopes	6.0	3.6%
Tr	Trinity clay, frequently flooded	13.7	8.3%
WhB	Wilson clay loam, 1 to 3 percent slopes	3.3	2.0%
Totals for Area of Interest		165.3	100.0%

