

9016 FM 2930, Blooming Grove, TX



COUNTRY LIVING, AT ITS BEST!

WONDERFUL 4/3/2 (3,022 sq ft) home on 7.37 acres, located in Cryer Creek. BGISD. Open concept floor plan with crown molding and ceramic tile throughout. Kitchen has Stainless Steel appliances with gas cook top, granite counters and breakfast bar. This home offers lots of extras: 10 - 11 ft ceilings, Hardwood flooring in Master bedroom, separate vanities, garden tub and large walk in shower in Master bath. Two bedrooms located on opposite side of home that share a full size bath. Plus a lot more!

Offered at \$245,000

128 S. Fordyce Street Blooming Grove, TX 76626 Office: 903.695.2978 Fax: 903.695.2980

 www.BlueSkyCountry.com 

Information contained herein has been obtained from the owner of the property or obtained from other sources that we deem reliable. We have no reason to doubt its accuracy, but we do not guarantee it.

Crown Molding throughout Family Room, Dining and Kitchen. Recessed lighting in Kitchen and Family Room.



OPEN CONCEPT FLOOR PLAN



Decorative lighting in Dining room and over Breakfast Bar . Ceramic tile throughout.

Blue Sky Country REAL ESTATE

www.BlueSkyCountry.com

Farm & Ranch, Homes, Commercial,
Recreation and Investment Properties

Robert Phipps
972-351-4710

Susan McCall
972-672-2317

Granite countertops and Stainless Steel appliances, with lots of cabinet space.



128 S. Fordyce Street Blooming Grove, TX 76626 Office: 903.695.2978 Fax: 903.695.2980

 www.BlueSkyCountry.com 

Information contained herein has been obtained from the owner of the property or obtained from other sources that we deem reliable. We have no reason to doubt its accuracy, but we do not guarantee it.



Master Bedroom



**Large walk in
Master Bath**



**Bedrooms
have plenty
of closet
space and
Bathrooms
have built-in
Linen cabi-
nets.**

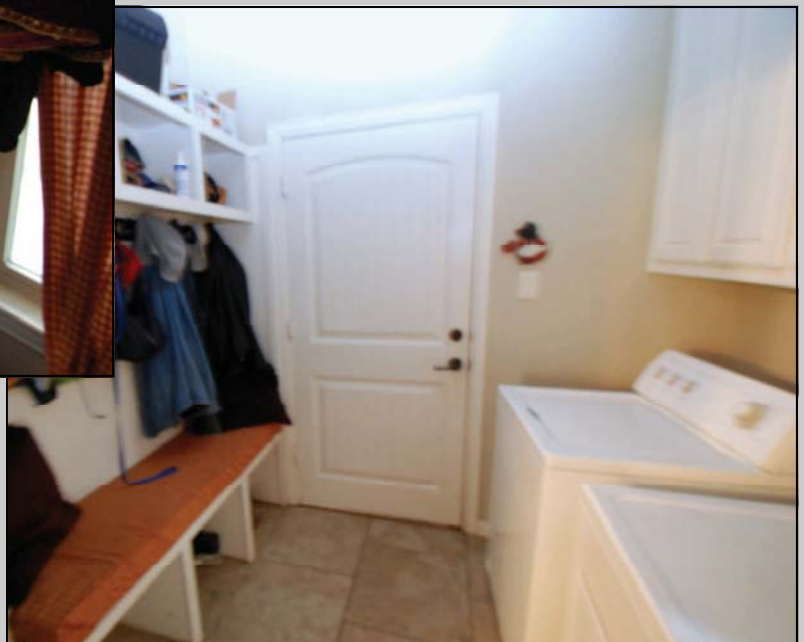
Bedroom 2 and Hall Bath





**Bedrooms 3 & 4
share a full size
bath, located be-
tween the two
rooms.**

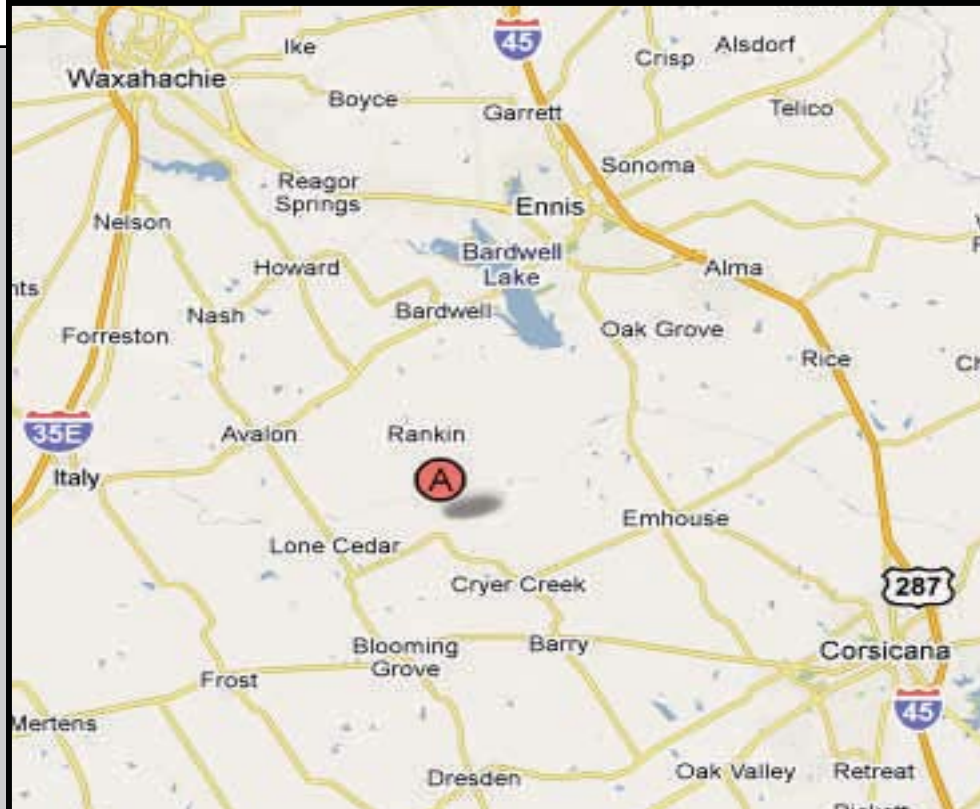




Utility room is off the garage and offers full size washer and dryer hookups. The office is located off the Family Room and has glass French Doors.

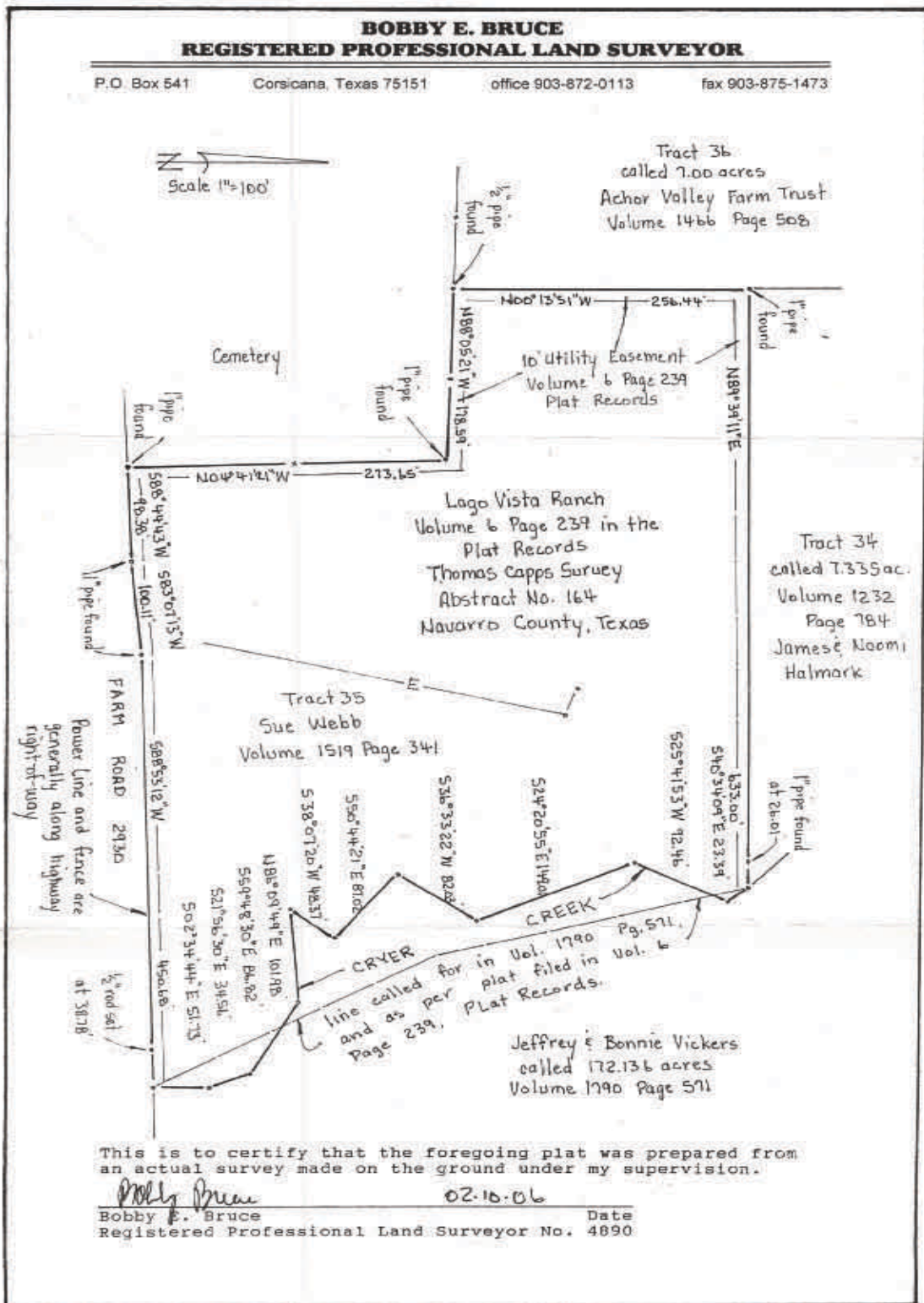
Directions:

From Blooming Grove go North on FM 55 to FM 2930, go approximately 3 miles, house on Left. SOP



Distances:

Dallas— 62 miles
Waxahachie— 18 miles
Ennis— 18 miles
Corsicana— 16 miles
Waco— 68 miles



Back Patio with ceramic tile porch and ceiling fans. French doors leading out from the Family room. House is pre-wired for swimming pool.



Blue Sky Country REAL ESTATE

www.BlueSkyCountry.com

Farm & Ranch, Homes, Commercial,
Recreation and Investment Properties

Robert Phipps
972-351-4710

Susan McCall
972-672-2317



View of the creek with lots of native oaks and cedar trees.



128 S. Fordyce Street Blooming Grove, TX 76626 Office: 903.695.2978 Fax: 903.695.2980

 www.BlueSkyCountry.com 

Information contained herein has been obtained from the owner of the property or obtained from other sources that we deem reliable. We have no reason to doubt its accuracy, but we do not guarantee it.