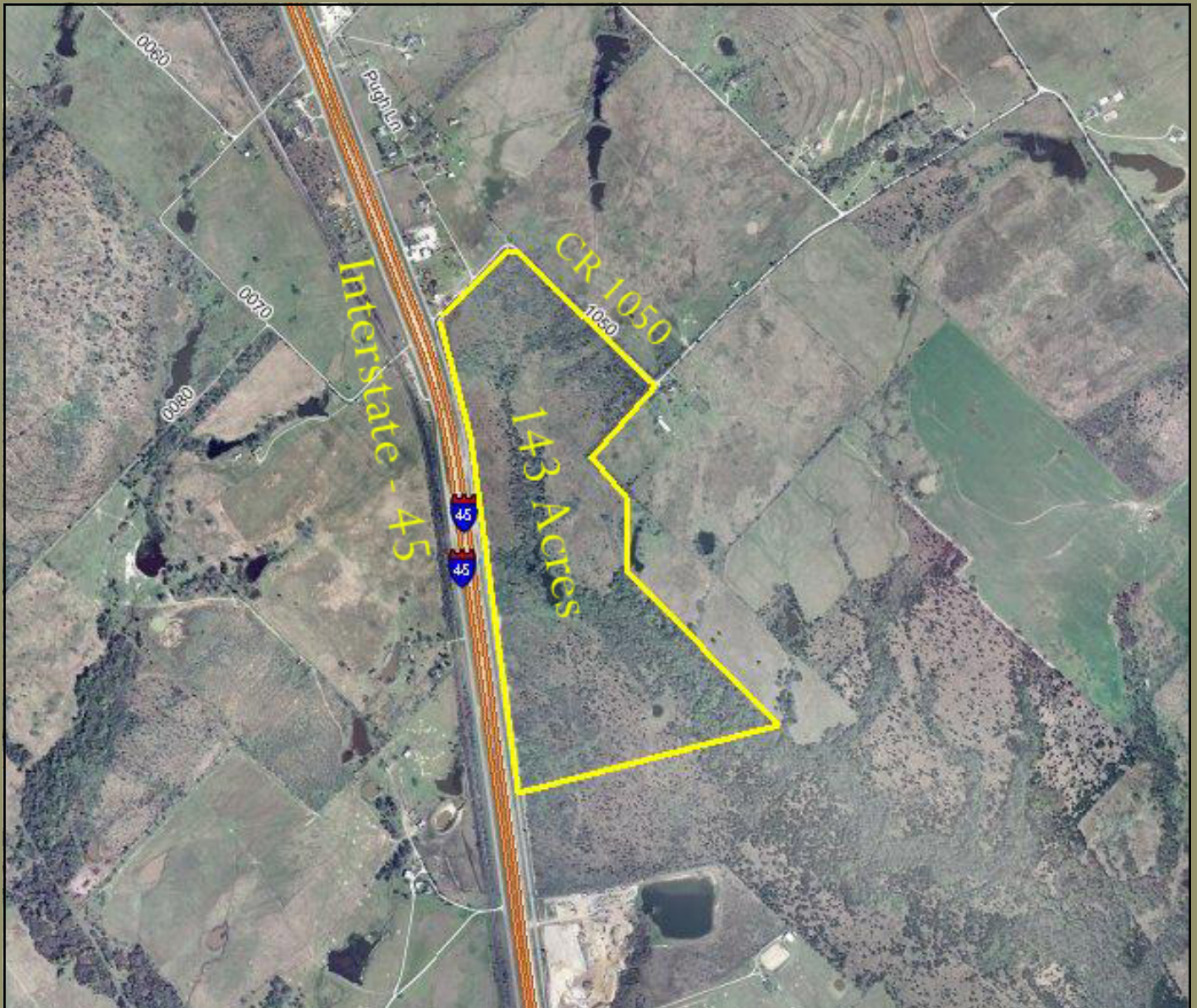


## Angus Business Park on I-45



- 26 Tracts from 2.6 to 18 acres
- Buy all or part

- I-45 & CR 1050 Frontage
- Water & Electric Available

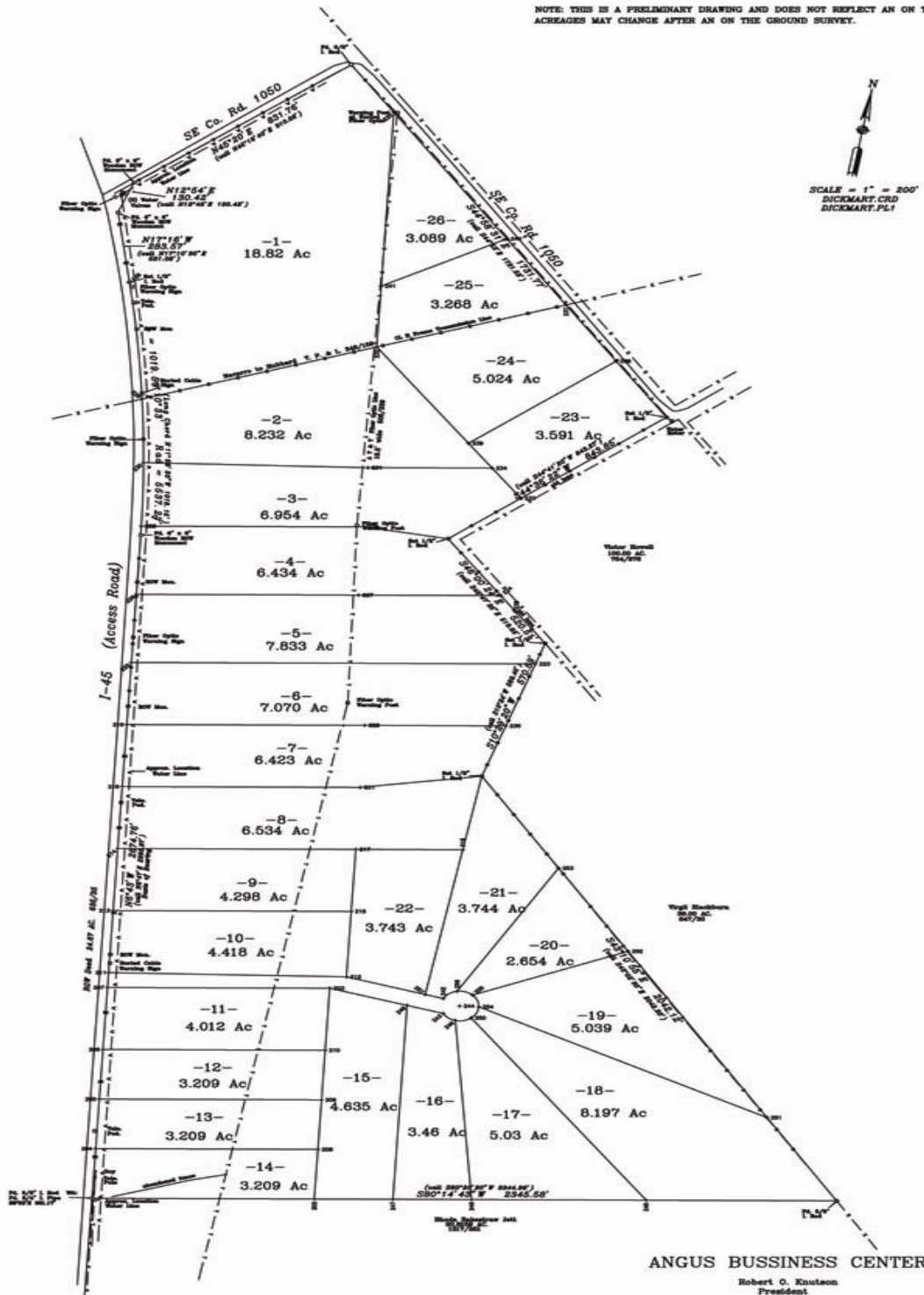
128 S. Fordyce Street • Blooming Grove, TX 76626 • Office: 903.695.2978 • Fax: 903.695.2980

 [www.SkyViewBroker.com](http://www.SkyViewBroker.com) 

Information contained herein has been obtained from the owner of the property or obtained from other sources that we deem reliable. We have no reason to doubt its accuracy, but we do not guarantee it.

NOTE: THIS IS A PRELIMINARY DRAWING AND DOES NOT REFLECT AN ON THE GROUND SURVEY. ACRES MAY CHANGE AFTER AN ON THE GROUND SURVEY.

NOTE: THIS IS A PRELIMINARY DRAWING AND DOES NOT REFLECT AN ON THE GROUND SURVEY. ACRES MAY CHANGE AFTER AN ON THE GROUND SURVEY.



NOTE: THIS IS A PRELIMINARY DRAWING AND DOES NOT REFLECT AN ON THE GROUND SURVEY. ACRES MAY CHANGE AFTER AN ON THE GROUND SURVEY.

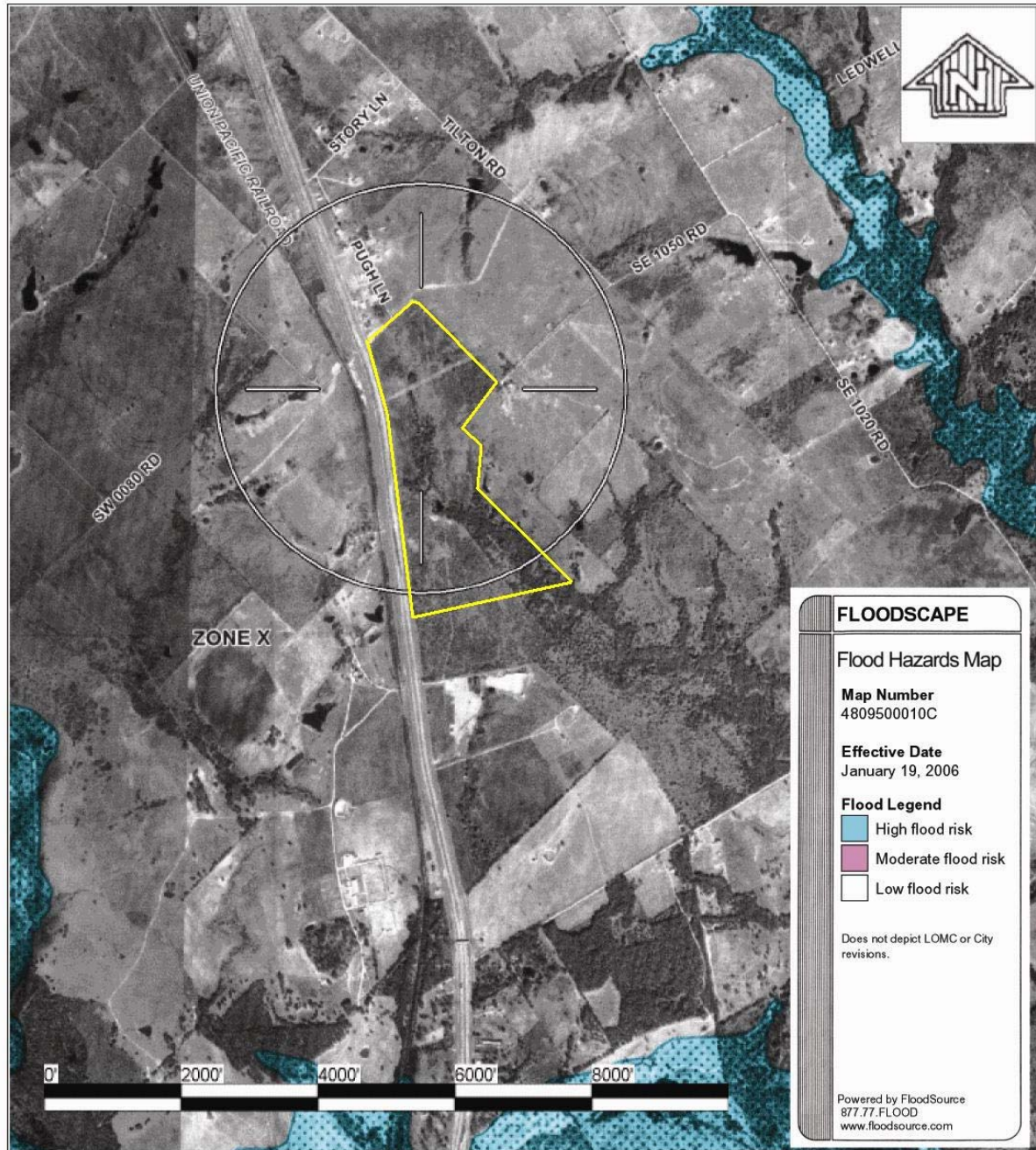
128 S. Fordyce Street • Blooming Grove, TX 76626 • Office: 903.695.2978 • Fax: 903.695.2980

[www.SkyViewBroker.com](http://www.SkyViewBroker.com)

Information contained herein has been obtained from the owner of the property or obtained from other sources that we deem reliable. We have no reason to doubt its accuracy, but we do not guarantee it.



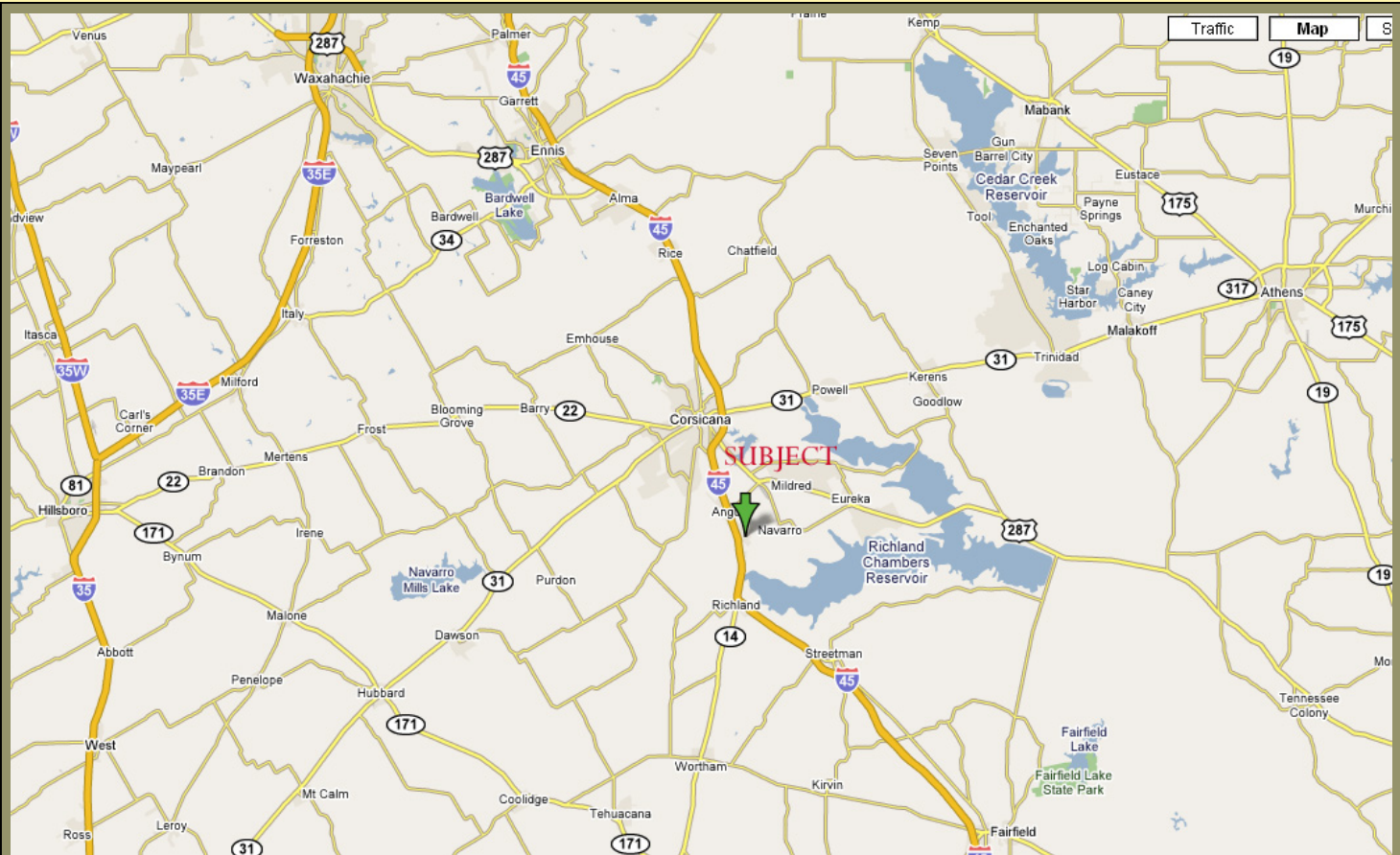
Prepared for:  
Angus 143 Acres  
Angus, TX



128 S. Fordyce Street • Blooming Grove, TX 76626 • Office: 903.695.2978 • Fax: 903.695.2980

 www.SkyViewBroker.com 

Information contained herein has been obtained from the owner of the property or obtained from other sources that we deem reliable. We have no reason to doubt its accuracy, but we do not guarantee it.



***Distance From:***

***Corsicana: 10 Miles***

***Streetman: 11 Miles***

***Fairfield: 25 Miles***

***Ennis: 31 Miles***

***Hillsboro: 40 Miles***

***Waxahachie: 45 Miles***

***Dallas: 55 Miles***

***Houston: 184 Miles***