

134 Acres Cultivated Land - Dawson, TX



Approx 134 Acres Cultivated Land with approx 1600 ft
of Road Frontage on SW CR 4160. Dawson ISD. Cur-
rently in AG. SW Corner of FM 638 and SW CR 4160
south of Dawson.
\$2,500 per acre

128 S. Fordyce Street • Blooming Grove, TX 76626 • Office: 903.695.2978 • Fax: 903.695.2980

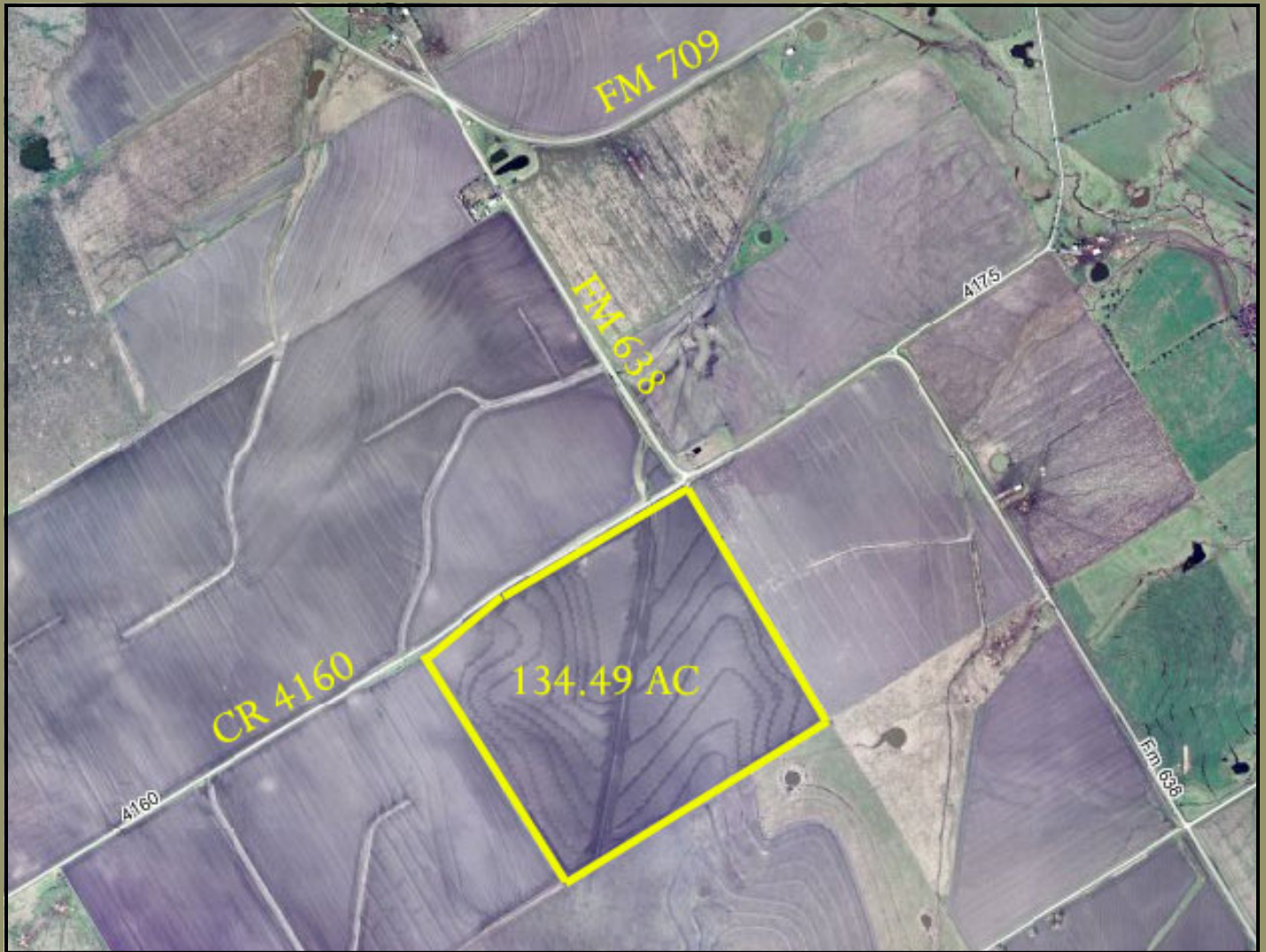
 www.SkyViewBroker.com 

Information contained herein has been obtained from the owner of the property or obtained from other sources that we deem reliable. We have no reason to doubt its accuracy, but we do not guarantee it.

Sky View REAL ESTATE

Farm & Ranch, Homes, Commercial,
Recreation and Investment Properties

Robert Phipps *Broker / Owner*
Cell: 972.351.4710 | Email: RLP2000@airmail.net



128 S. Fordyce Street • Blooming Grove, TX 76626 • Office: 903.695.2978 • Fax: 903.695.2980

www.SkyViewBroker.com

Information contained herein has been obtained from the owner of the property or obtained from other sources that we deem reliable. We have no reason to doubt its accuracy, but we do not guarantee it.

[Add Destination](#) - [Show options](#)

 By car

Driving directions to FM-638
21.5 mi – about 27 mins

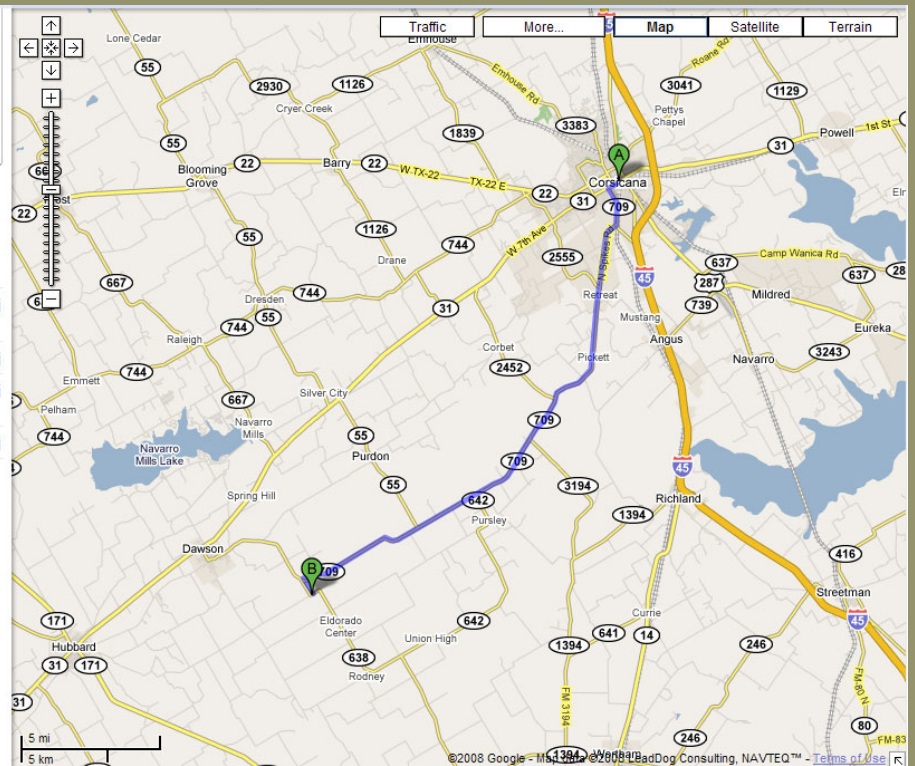
A Corsicana, TX

1. Head **southwest** on **W 7th Ave/TX-31** toward **S Main St** 0.3 mi
2. Turn **left** at **S 15th St/FM-709** 1.4 mi
3. Turn **right** at **FM-709/N Spikes Rd**
Continue to follow FM-709 19.1 mi
4. Sharp **left** at **FM-638** 0.7 mi

B FM-638

These directions are for planning purposes only. You may find that construction projects, traffic, weather, or other events may cause conditions to differ from the map results, and you should plan your route accordingly. You must obey all signs or notices regarding your route.

Map data ©2008 LeadDog Consulting, NAVTEQ™



[Add Destination](#) - [Show options](#)

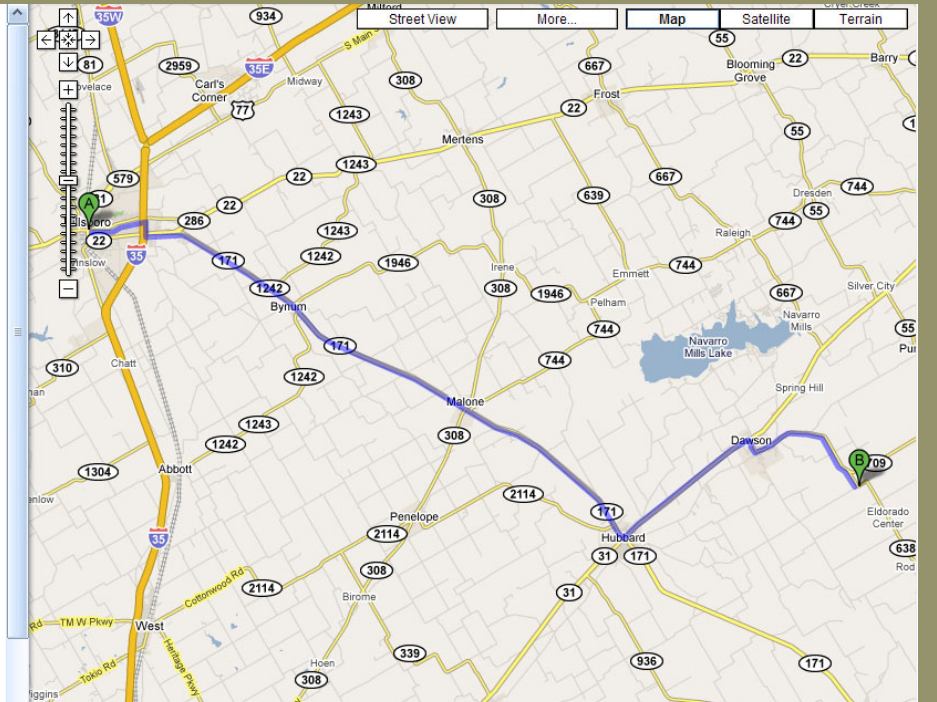
 By car

Driving directions to FM-638
35.4 mi – about 49 mins

A Hillsboro, TX

1. Head **north** on **TX-81** toward **W Franklin St** 177 ft
2. Turn **right** at **FM-286/E Franklin St**
Continue to follow FM-286 2.0 mi
3. Turn **right** at **I-35 S** 0.6 mi
4. Turn **left** at **TX-171/TX-22**
Continue to follow TX-171 21.4 mi
5. Turn **left** at **NE 4th St/TX-31**
Continue to follow TX-31 5.9 mi
6. Turn **right** at **FM-709/N Fullerton Ave**
Continue to follow FM-709 0.3 mi
7. Turn **left** at **FM-709/N Main St** 0.3 mi
8. Turn **left** at **N 1st St E/FM-709**
Continue to follow FM-709 4.2 mi
9. Slight **right** at **FM-638** 0.7 mi

B FM-638



128 S. Fordyce Street • Blooming Grove, TX 76626 • Office: 903.695.2978 • Fax: 903.695.2980

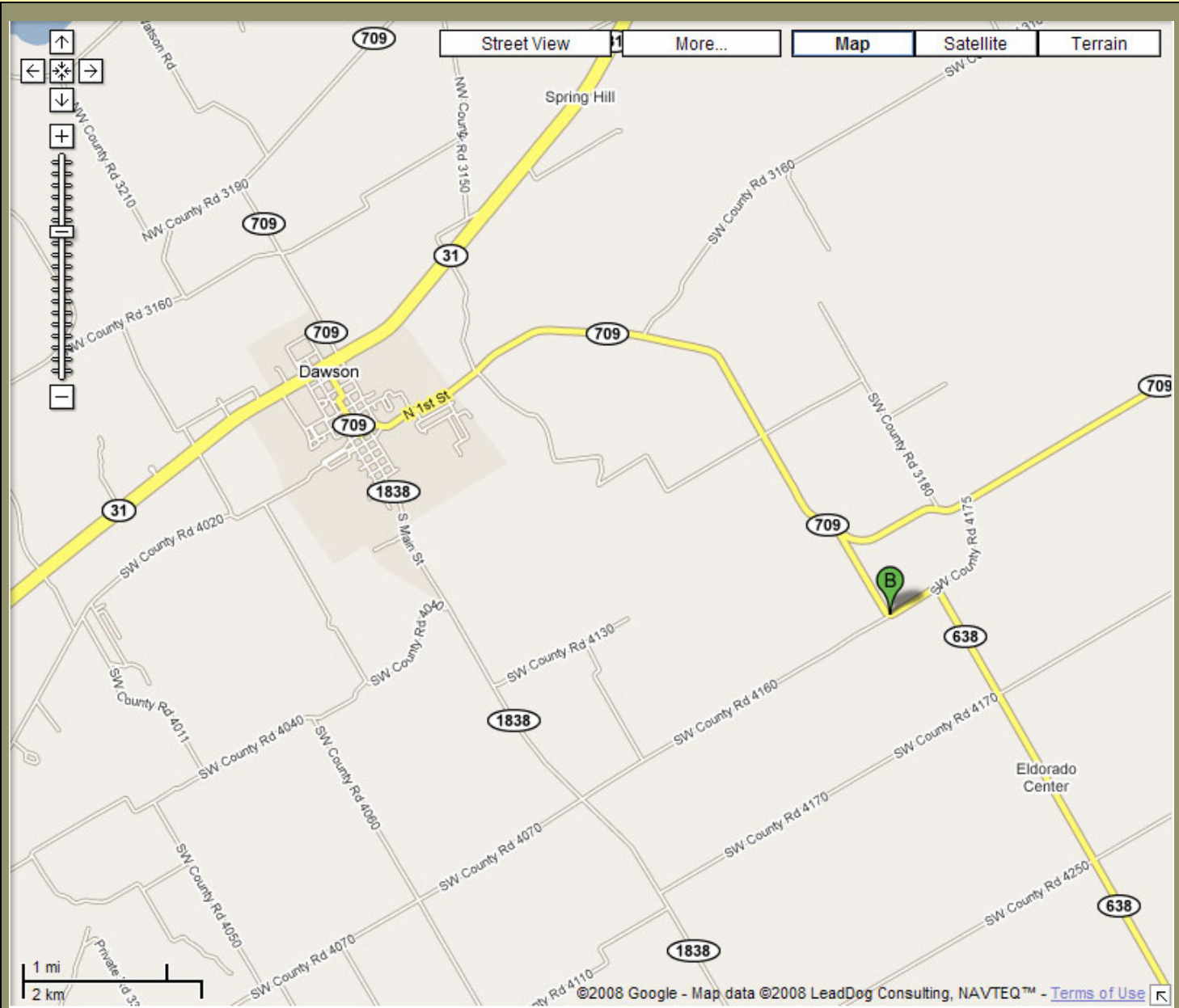
www.SkyViewBroker.com

Information contained herein has been obtained from the owner of the property or obtained from other sources that we deem reliable. We have no reason to doubt its accuracy, but we do not guarantee it.

Sky View REAL ESTATE

Farm & Ranch, Homes, Commercial,
Recreation and Investment Properties

Robert Phipps *Broker / Owner*
Cell: 972.351.4710 | Email: RLP2000@airmail.net



128 S. Fordyce Street • Blooming Grove, TX 76626 • Office: 903.695.2978 • Fax: 903.695.2980

www.SkyViewBroker.com

Information contained herein has been obtained from the owner of the property or obtained from other sources that we deem reliable. We have no reason to doubt its accuracy, but we do not guarantee it.